

MEP SUB CONTRACTOR:

T & C QATAR L.L.C. - C.R. 35109  
P.O. Box: 2329 DOHA, QATAR  
TEL: (+974) 4421 833 / 4930 614  
FAX: (+974) 4410 553 / 4930 614



CONSULTANT:

المكتب العربي للمقاولات الهندسية  
ARAB ENGINEERING BUREAU  
شركة مقاولات هندسية  
ARAB ENGINEERING BUREAU  
تلفون: +974 4477 988 / 4930 614  
P.O. Box 848 Doha Qatar  
Email: aeb@ab-qatar.com Web: www.ab-qatar.com

DESIGNER:



MAIN CONTRACTOR:



AL MADAR CONTRACTING  
P.O. Box: 2329 DOHA, QATAR  
TEL: (+974) 4675405 - 4674466  
FAX: (+974) 4671333 - C.R. : 15061  
WEB SITE: www.almadar-group.com  
Email: conteng@almadar-group.com

OWNER:

ALI ABDUL REDA MASHHADI

PROJECT:

AL NOOR OFFICE TOWER AT NEW DOHA  
2B+G+F+22 FLOORS

DRAWING TITLE:

GROUND FLOOR  
MEP OPENING LAYOUT (SLAB)

DRAWING REFERENCE:

- TC01M4G00003 - GROUND FLOOR DRAINAGE
- TC01M1G00050 - GROUND FLOOR FIRE FIGHTING
- TC01M2G00014 - GROUND FLOOR WATER SUPPLY
- TC01M3G00066 - GROUND FLOOR HVAC / CHILLED WATER
- TC01M3B01065 - FIRST BASEMENT HVAC / CHILLED WATER
- TC01M3B02064 - SECOND BASEMENT HVAC / CHILLED WATER
- TC01E2B01024 - FIRST BASEMENT POWER & TELEPHONE

DRAWN BY D. PASQUINELLI

CHECKED BY M. ALAA

APPROVED BY M. MOHAMUD

DATE 04.07.07

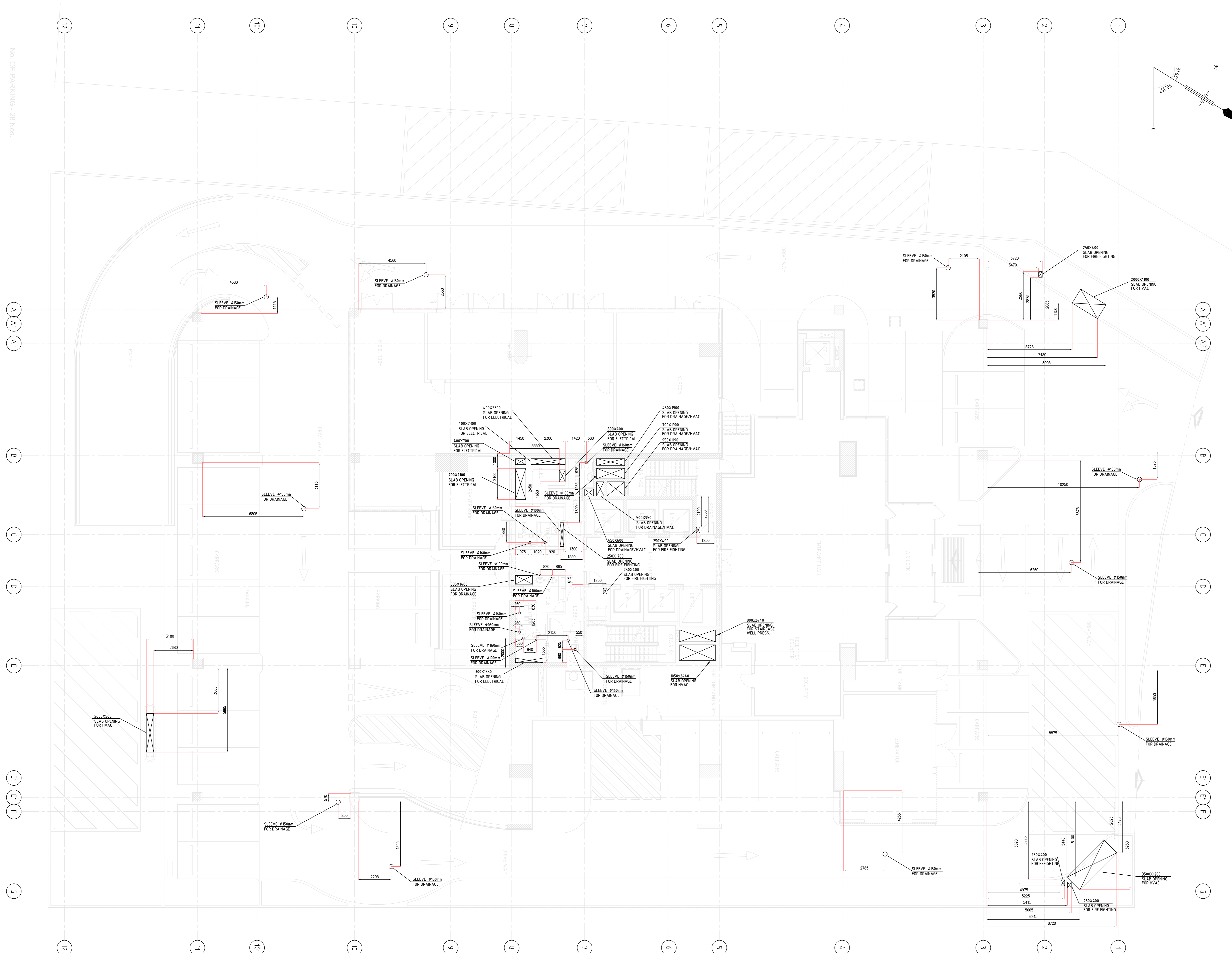
SCALE 1:100 SIZE AO

REVISION 0

DATE 04.07.07

DRAWING NO. TC01X2G00111

SHEET 1 OF 2



No. OF PARKING = 28 Nos.